



Make your

# Selection

Edition 2024





### Configurator

Configure and order your custom  
USM furniture online.

**USM Selection ...** Whether you're looking for a sideboard, small unit, media unit or tables and storage furniture for the workspace: the USM Selection offers a carefully curated assortment of the most popular USM pieces.

With a choice of all 15 USM colours and the many possibilities, we offer you the suitable USM solution for your home and office.

- 2 Storage
- 8 Entertainment
- 12 Small units
- 18 Dining
- 20 Home office
- 26 Accessories
- 30 Colours

# Storage

1



- 1 QS\_E2  
L/D/H: 1523/373/740 mm  
with four drop-down doors
- 2 QS\_C2  
L/D/H: 1523/373/740 mm  
with two drop-down doors
- 3 QS\_M64  
L/D/H: 1523/373/1090 mm  
with four drop-down doors

2

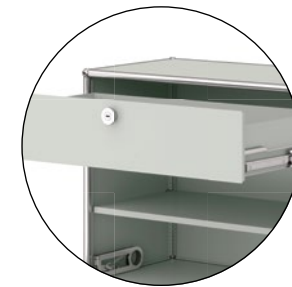


3





- 4 **QS\_M58**  
L/D/H: 773/373/1090 mm  
with one drop-down door and  
dimmable light (warm white),  
incl. wall anchor set
- 5 **QS\_M25**  
L/D/H: 773/373/915 mm  
with two drop-down doors, two  
divider shelves and one extension  
door with metal box insert,  
incl. wall anchor set
- 6 **QS\_M51**  
L/D/H: 1023/273/815 mm  
with two drop-down doors,  
incl. wall anchor set



5

Well organised  
Extension doors  
and divider shelves  
make sorting  
easier.

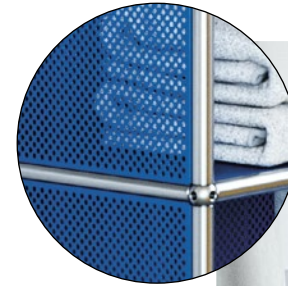
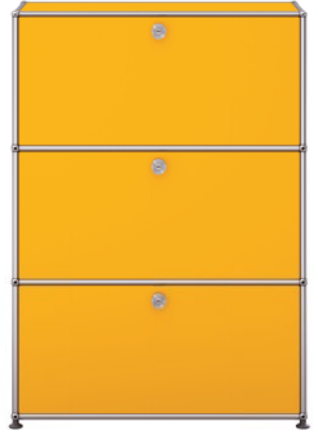




7

- 7 QS\_M52  
L/D/H: 523 x 373/1590 mm  
with two drop-down doors  
and one extension door  
with metal box insert,  
incl. wall anchor set
- 8 QS\_G1  
L/D/H: 773/373/1090 mm  
with three drop-down doors,  
incl. wall anchor set
- 9 QS\_M51  
L/D/H: 773/373/990 mm  
with perforated metal panels,  
three plant pots and three  
watering sets, incl. wall anchor set

8



Airy design  
due to perforated  
metal panels



9

# Entertainment

10

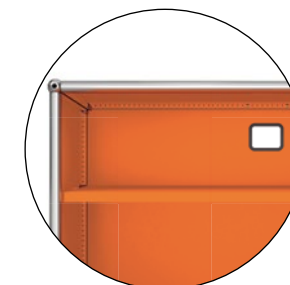


- 10 QS\_M57  
L/D/H: 1273/373/740 mm  
with two drop-down doors,  
two plant pots and two  
watering sets
- 11 QS\_M61  
L/D/H: 1523/373/430 mm  
with two drop-down doors,  
one divider shelf and  
one cable cut-out, on castors  
with soft running surface,  
two of which are lockable
- 12 QS\_O2  
L/D/H: 1523/373/565 mm  
with two drop-down doors

11



Smart cable management  
A cable cut-out in the  
rear panel allows TV  
and HiFi equipment to  
be stored behind  
a drop-down door.



12



13 QS\_M59  
L/D/H: 1523/373/390 mm  
with two drop-down doors,  
one divider shelf, one cable  
cut-out and dimmable light  
(warm white)



# Small units



14

- 14 QS\_S2  
L/D/H: 773/373/740 mm  
with two drop-down doors
- 15 QS\_M22  
L/D/H: 523/523/390 mm
- 16 QS\_M21  
L/D/H: 523/418/390 mm

15



16



17 QS\_M53

L/D/H: 373/373/430 mm  
with pull handle, on castors  
with soft running surface

18 QS\_M62

L/D/H: 773/373/740 mm  
with one drop-down door



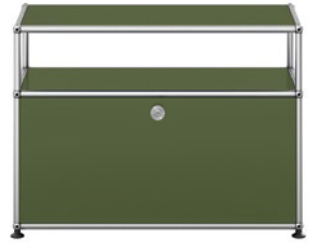


19 QS\_M55  
L/D/H: 523/373/565 mm  
with one drop-down door  
and one divider shelf

20 QS\_O1  
L/D/H: 773/373/565 mm  
with one drop-down door

21 QS\_M54  
L/D/H: 523 x 373/565 mm  
with one drop-down door

20



# Dining

22



23



22 QS\_L  
L/D/H: 773/523/575 mm  
with pull handle, on castors  
with soft running surface,  
two of which are lockable

23 QS\_T69  
L/D/H: 1750/750/740 mm  
Laminate, pearl grey  
Linoleum, nero  
Fenix, Bianco Kos  
Further table sizes  
L/D/H: 1500/750/740 mm  
L/D/H: 1250/500/740 mm  
see page 23

# Home office



24

25

24 QS\_M26  
L/D/H: 418/523/605 mm  
with three 175-mm drawers and  
counterweights, on castors  
with soft running surface,  
two of which are lockable



26

25 QS\_T6  
L/D/H: 1750/750/700 – 1200 mm  
with mechanical height adjustment  
Laminate, pearl grey  
Linoleum, nero

26 QS\_K1  
L/D/H: 240/335/315 mm  
with five drawers

27 Stackable accessories  
see page 27

27



Laminate, pearl grey  
Linoleum, nero

Work while sitting or standing  
Infinitely mechanically  
height adjustable without  
power consumption





30



Get organised  
with Inos trays  
and inserts

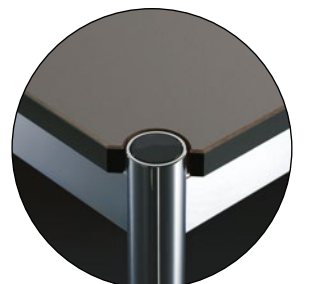
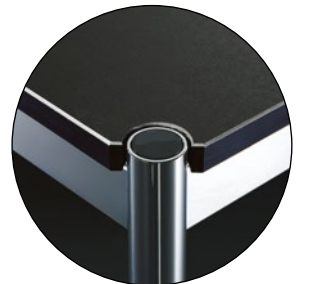
28 QS\_M24  
L/D/H: 773/373/1790 mm  
with two drop-down doors,  
incl. wall anchor set

29 QS\_T8  
L/D/H: 1250/500/740 mm  
Laminate, pearl grey  
Linoleum, nero  
Fenix, Grigio Londra

30 QS\_M63  
L/D/H: 418/523/605 mm  
with three drawers 100/175/250 mm,  
incl. Inos drawer insert and counter-  
weights, on castors with soft running  
surface, two of which are lockable

31 QS\_T59  
L/D/H: 1500/750/740 mm  
Laminate, pearl grey  
Linoleum, nero  
Fenix, Bianco Kos  
  
Further table sizes  
L/D/H: 1750/750/740 mm  
see page 19

Laminate, pearl grey  
Linoleum, nero  
Fenix, Bianco Kos  
Fenix, Grigio Londra



31



32 see page 7, no. 8

33 QS\_B21  
L/D/H: 1168/523/740 mm  
with one drop-down door  
and a cable cut-out



32



33

# Accessories



## USM Inos box

34 DE\_QS\_B1.71  
L/D/H: 223/322/95 mm  
USM set Inos box deep,  
250, with tray, light grey

35 DE\_QS\_B3.71  
L/D/H: 223/322/190 mm  
USM set Inos box high,  
250, with tray, light grey

36 DE\_QS\_B5.71  
L/D/H: 223/322/95 mm  
USM set Inos box deep,  
250, with longitudinal  
and traverse partitions,  
light grey

37 DE\_QS\_B7.71  
L/D/H: 223/322/190 mm  
USM set Inos box high,  
250, with longitudinal  
and traverse partitions,  
light grey

38 DE\_QS\_B1.70  
See description 34,  
anthracite

39 DE\_QS\_B3.70  
See description 35,  
anthracite

40 DE\_QS\_B5.70  
See description 36,  
anthracite

41 DE\_QS\_B7.70  
See description 37,  
anthracite

42 DE\_QS\_B2.71  
L/D/H: 453/322/95 mm  
USM set Inos box deep,  
500, with tray, light grey

43 DE\_QS\_B4.71  
L/D/H: 453/322/190 mm  
USM set Inos box high,  
500, with tray, light grey

44 DE\_QS\_B6.71  
L/D/H: 453/322/95 mm  
USM set Inos box deep,  
500, with longitudinal  
and traverse partitions,  
light grey

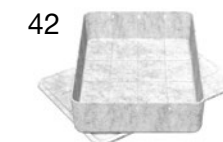
45 DE\_QS\_B8.71  
L/D/H: 453/322/190 mm  
USM set Inos box high,  
500, with longitudinal  
and traverse partitions,  
light grey

46 DE\_QS\_B2.70  
See description 42,  
anthracite

47 DE\_QS\_B4.70  
See description 43,  
anthracite

48 DE\_QS\_B6.70  
See description 44,  
anthracite

49 DE\_QS\_B8.70  
See description 45,  
anthracite



The dimensions provided  
refer to the external dimensions.  
For further information,  
visit [www.usm.com](http://www.usm.com)



USM Inos drawer set

50 DE\_QS\_K1.24  
L/D/H: 240/335/315 mm  
with five drawers,  
pure white

51 DE\_QS\_K1.29  
L/D/H: 240/335/315 mm  
with five drawers,  
light grey

52 DE\_QS\_K1.30  
L/D/H: 240/335/315 mm  
with five drawers,  
graphite black

53 DE\_QS\_K1.33  
L/D/H: 240/335/315 mm  
with five drawers,  
anthracite

54 DE\_QS\_K1.32  
L/D/H: 240/335/315 mm  
with five drawers,  
USM mid-grey

55 DE\_QS\_K1.35  
L/D/H: 240/335/315 mm  
with five drawers,  
USM matte silver

56 DE\_QS\_K1.31  
L/D/H: 240/335/315 mm  
with five drawers,  
USM beige

57 DE\_QS\_K1.22  
L/D/H: 240/335/315 mm  
with five drawers,  
USM brown

58 DE\_QS\_K1.25  
L/D/H: 240/335/315 mm  
with five drawers,  
golden yellow

59 DE\_QS\_K1.26  
L/D/H: 240/335/315 mm  
with five drawers,  
pure orange

60 DE\_QS\_K1.23  
L/D/H: 240/335/315 mm  
with five drawers,  
USM ruby red

61 DE\_QS\_K1.34  
L/D/H: 240/335/315 mm  
with five drawers,  
steel blue

62 DE\_QS\_K1.27  
L/D/H: 240/335/315 mm  
with five drawers,  
gentian blue

63 DE\_QS\_K1.28  
L/D/H: 240/335/315 mm  
with five drawers,  
USM green

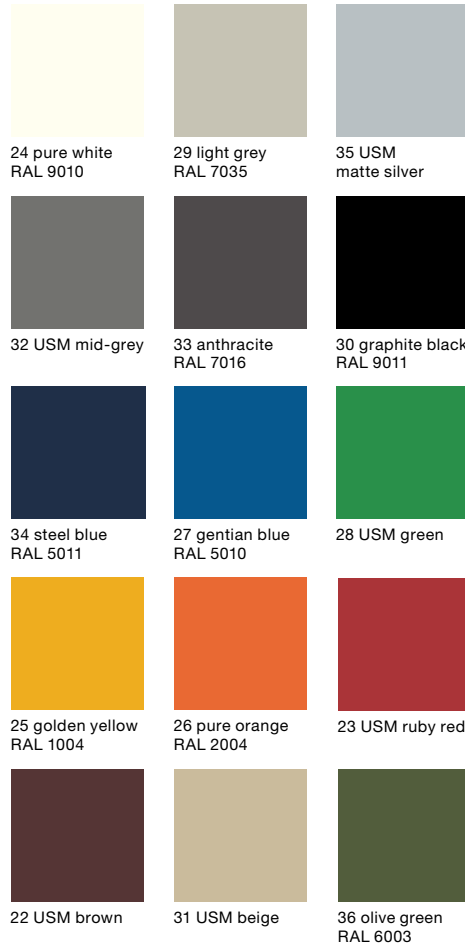
64 DE\_QS\_K1.36  
L/D/H: 240/335/315 mm  
with five drawers,  
olive green





# Colours

## USM Haller furniture



## USM Haller tables



## USM Kitos M table



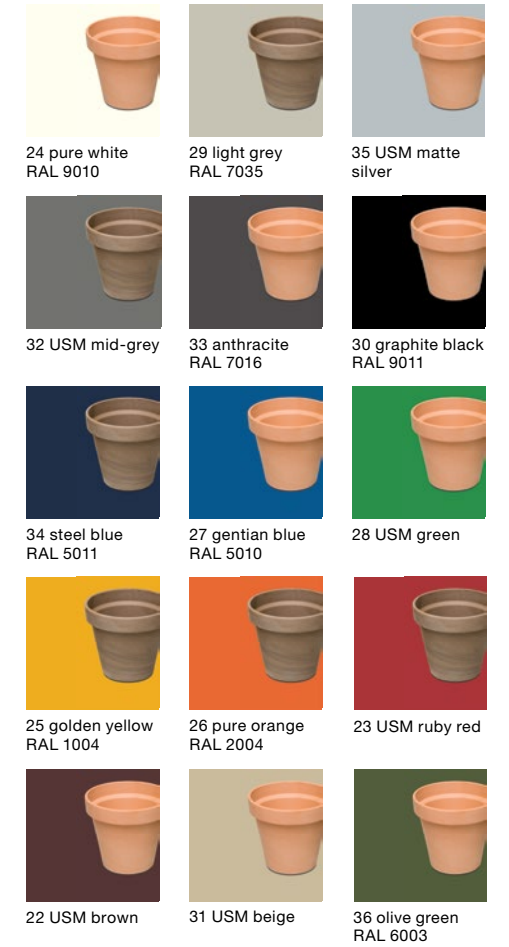
## USM Inos box



## USM Inos drawer set



## USM Haller furniture with corresponding pot in terracotta or basalt



# Notes

A large grid of small dots for taking notes, covering most of the left and center of the page.



## Individual advice

Visit our USM showrooms or one of our 400 dealers worldwide and seek individual advice from our experts. Find a USM dealer near you online.

[www.usm.com](http://www.usm.com)

## Switzerland

USM U. Schärer Söhne AG  
Thunstrasse 55, 3110 Münsingen  
Phone +41 31 720 72 72, info.ch@usm.com

## Germany

USM U. Schärer Söhne GmbH  
Siemensstraße 4a, 77815 Bühl  
Phone +49 7223 80 94 0, info.de@usm.com

## France

USM U. Schärer Fils SA, Showroom  
23, rue de Bourgogne, 75007 Paris  
Phone +33 1 53 59 30 37, info.fr@usm.com

## United Kingdom

USM U. Schaerer Sons Ltd., London Showroom  
Ground Floor, 49–51 Central St., London, EC1V 8AB  
Phone +44 207 183 3470, info.uk@usm.com

## USA

USM U. Schaerer Sons Inc., New York Showroom  
28–30 Greene Street, New York, NY 10013  
Phone +1 212 371 1230, info.us@usm.com

## Japan

USM U. Schaerer Sons K.K., Tokyo Showroom  
Marunouchi MY PLAZA 1 · 2F  
2-1-1 Marunouchi, Chiyoda-ku, Tokyo 100-0005  
Phone +81 3 6635 9420, info.jp@usm.com

All other countries  
contact USM Switzerland.

[www.usm.com](http://www.usm.com)